

**BOARD OF EDUCATION POLICY MANUAL  
TABLE OF CONTENTS  
SECTION 1 - SCHOOL DISTRICT ORGANIZATION**

1:10	School District Legal Status
1:20	District Organization, Operations, and Cooperative Agreements
1:21	School District #3 Organizational Chart
1:30	School District Philosophy
1:31	School District #3 Mission Statement and Beliefs



**School District Legal Status**

The Illinois Constitution requires the State to provide for an efficient system of high quality public educational institutions and services in order to achieve the educational development of all persons to the limits of their capabilities.

The General Assembly has implemented this mandate through the creation of school districts. The District is governed by the laws for school districts having a population of not fewer than 1,000 and not more than 500,000.

The Board of Education constitutes a body corporate that possesses all the usual powers of a corporation for public purposes, and in that name may sue and be sued, purchase, hold and sell personal property and real estate, and enter into such obligations as are authorized by law.

LEGAL REF.: Ill. Constitution, Art. X, Sec. 1.  
105 ILCS 5/10-1 et seq.

CROSS REF.: 2:10, 2:20

ADOPTED: December 16, 2002



**District Organization, Operations, and Cooperative Agreements**

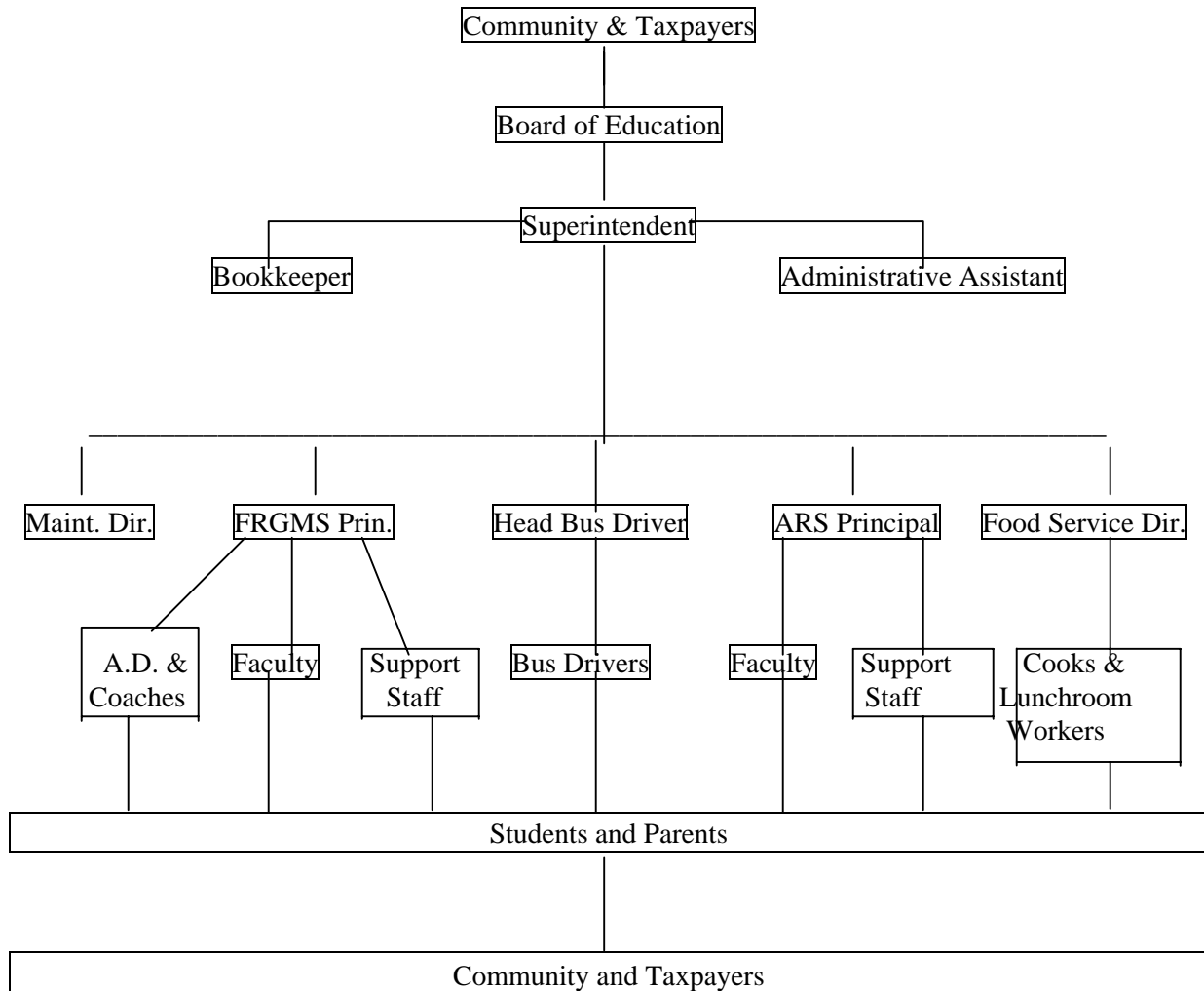
The District is organized and operates as an Elementary District serving the needs of children in grades Kindergarten to 8 and others as required by the School Code.

The District participates in the following joint program:

*Special Education District of McHenry County (SEDOM)*

ADOPTED: December 16, 2002

**School District 3 Organizational Chart**



### **School District Philosophy**

The School District, in an active partnership with parents and community, will promote excellence in a caring environment in which all students learn and grow. This partnership shall empower all students to develop a strong self-esteem and to become responsible learners and decision-makers. The School District is committed to developing and using a visionary and innovative curriculum and a knowledgeable and dedicated staff.

CROSS REF: 6:10

ADOPTED: December 16, 2002

## **School District 3 Mission Statement, Beliefs and Parameters**

Mission Statement --

Educational Excellence is the Pathway to a Successful Future

School District 3 Beliefs --

### **Beliefs**

- In continuous evaluation and improvement of the academic achievement within the district
- In providing the best educational experience for all students which promotes life-long learning
- All children can learn and reach their full potential
- Learning is cultivated in a safe, nurturing and respectful environment
- Open and effective communication creates active partnerships
- A highly qualified, committed and motivated staff is critical to optimal learning

### **Parameters**

- We will always treat people with dignity and respect
- We will always ensure that expenditures will benefit the educational process
- We will value all ideas
- We will involve appropriate stakeholders in the decision making process
- We will appropriately communicate information about our decisions to all impacted stakeholders

ADOPTED: December 16, 2002